

# Electric Press

Assembly and Forming Solutions  
for Technical Parts



## Advantages

### Energy Savings & Precision

- ▶ Greater energy efficiency compared to hydraulic and pneumatic solutions
- ▶ Gain in repeatability and accuracy

### Economic & Flexible

- ▶ Save money by choosing an optimised selection of components in a predefined package
- ▶ Modular structure allows customisation based on application requirements

### Quiet & Compact

- ▶ Low sound level
- ▶ Save space in your workshop (compact solution)

### Travel speed

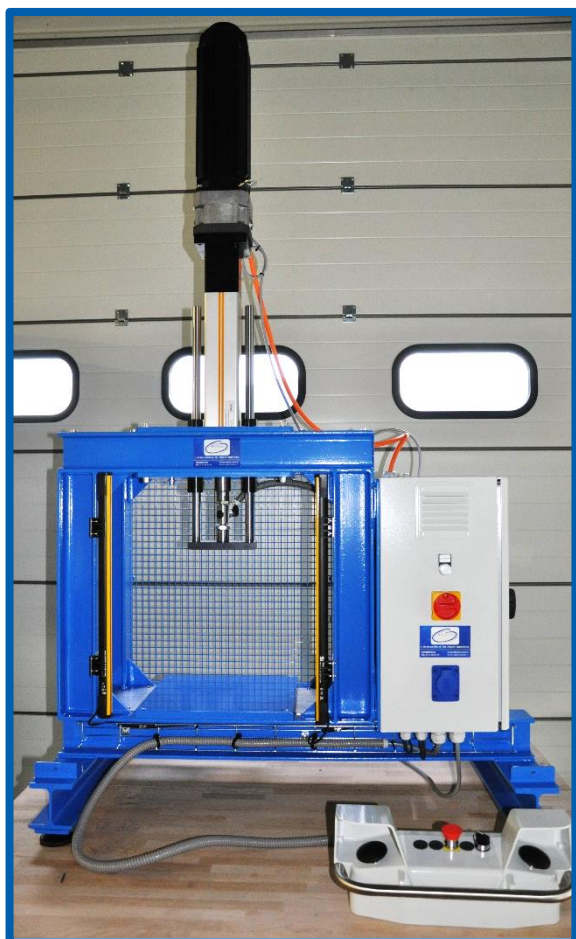
- ▶ Up to 4 times faster, thanks to the ballscrew design

### Simple Installation and maintenance

- ▶ Less maintenance with ball screw technology
- ▶ Wide range of industrial Ethernet based fieldbus options as standard
- ▶ Systems designed around standard, readily-available components
- ▶ Ease of use

### Safe Operation

- ▶ Security features included (immaterial barrier, bimanual control, safety relay, ...)



## Description

"SBPress" solutions are fully automated. They are preferred for industrial environments with the most stringent requirements in terms of accuracy and repeatability.

The range is divided into 4 electromechanical presses, applying a pressure from 0.9 to 11.4 tons, to meet the majority of industrial needs.

Make you own opinion,  
Come and try the SBPress 2,5T in our workshop!

This complete electromechanical press system is suitable for all common industrial operations:

- ▶ Assembly / Encasing
- ▶ Cutting
- ▶ Staking
- ▶ Crimping
- ▶ Folding



VISIONIS 2  
Rue du Développement  
01090 GUEREINS, FRANCE

+33 (0)4 74 69 42 15  
contact@sbprocess.fr



[www.sbprocess.fr](http://www.sbprocess.fr)

# Electric Press

Assembly and Forming Solutions  
for Technical Parts



## TRACKING (OPTIONAL)



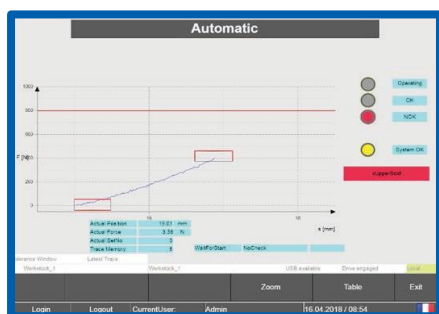
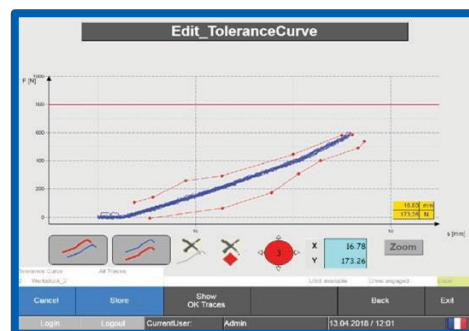
The **Tracking** option “**PARKER Push to Fit**” allows you to get precise information as well as a complete control of the press under an intuitive interface developed according to the precision industries needs. This option generates graphs and enables us to archive them according to the position and efforts provided by the press.

### Tolerance Curve

User defined tolerance entries apply to the following parameters:

- ▶ Position (mm)
- ▶ Minimum allowable force (N)
- ▶ Maximum permitted force (N)

As long as the power is within the tolerance the process is correct.



### Automatic - Operating Window

During each operation cycle, a real time representation of the process appears as a force-stroke diagram F(x). All windows and envelopes are displayed.

Real-time graph generation and scaling are fully automated.

### Technical Characteristics

Profile	Up to 20 positioning instructions
Repetability	+/- 0.03mm (ISO230-2)
Optional Monitoring Modes	Force / Path
Tolerance band	Up to a maximum of 50 monitoring points per Monitoring line (maximum force line / minimum) A linear interpolation occurs between the input points.
Tolerance window	Up to a maximum of 5 monitoring windows per joining process.
Programme cycle time	1msec
Measuring points per curve	Maximum 2000 measuring points (Distance / Force)
Adjustable measuring point recording	1 msec up to 5 msec
Internal curve storage	Up to 500 curves



VISIONIS 2  
Rue du Développement  
01090 GUEREINS, FRANCE

+33 (0)4 74 69 42 15  
contact@sbprocess.fr



www.sbprocess.fr

# Electric Press

Assembly and Forming Solutions  
for Technical Parts



## RANGE OF PRESSES

### Our Electric Presses



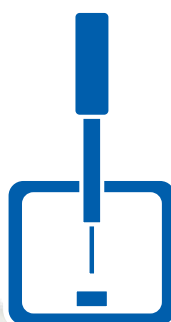
#### SBPress 0,9T

- ▶ Max Force = 9 300N
- ▶ Max Velocity = 250mm/s



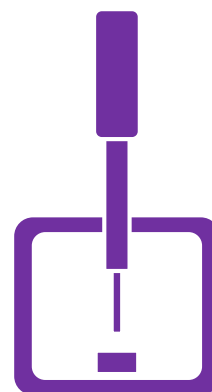
#### SBPress 2,5T

- ▶ Max Force = 25 100N
- ▶ Max Velocity = 500mm/s



#### SBPress 5,6T

- ▶ Max Force = 56 000N
- ▶ Max Velocity = 200mm/s



#### SBPress 11,4T

- ▶ Max Force = 114 000N
- ▶ Max Velocity = 133mm/s

### Realization

The "SBPress" are made to order in perfect accordance with your specification, The options will be defined to perfectly match your industrial criteria.

The "SBPress" are delivered ready to use by our technicians:

- ▶ Industrial assembly in our workshop
- ▶ Mounted on support frame
- ▶ Tested in operation
- ▶ Wired and connected to your process
- ▶ Getting started in your factory

The presses are made by SBPROCESS and are assembled and mounted on support frame, by our technical teams, into our workshop located in Guereins.

Our presses are equipped with



technical equipment.



**VISIONIS 2**  
Rue du Développement  
01090 GUEREINS, FRANCE

+33 (0)4 74 69 42 15  
contact@sbprocess.fr



[www.sbprocess.fr](http://www.sbprocess.fr)